



DUCATI energia

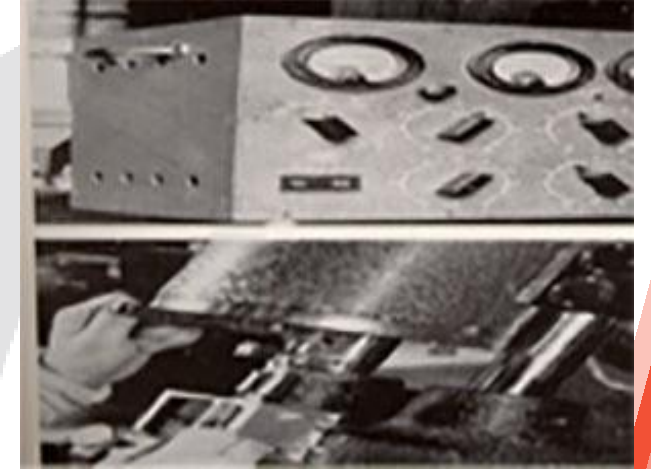
HISTORY DRIVES THE FUTURE

Power Electronic Film Capacitors

Capacitors Excellence since 1926

DUCATI ENERGIA owns its fame to the Ducati brothers who established the DUCATI Company in **1926**. 22 years later, DUCATI was split in two other companies, **DUCATI Elettrotecnica** and **DUCATI Meccanica** (today **DUCATI Motor Holding**).

Founded in **1985**, **DUCATI ENERGIA** is nowadays considered **one of the most important companies in the Bologna area** with a staff list of **more than 1400** employees working in its **9 worldwide plants** with an annual revenue of **above 200 M€**



Ducati in the World

Centro Ricerche DUCATI
Rovereto, Italy

DUCATI Komponenti
Ludbreg, Croatia

DUCATI energia Romania
Busteni, Pucioasa and Ploiesti, Romania

Bologna Headquarters

Telefin-Nuraia DUCATI
Verona, Italy

DUCATI energia South America
Buenos Aires, Argentina

DUCATI energia do Brasil
Sao Paulo, Brasil

DUCATI energia India
Pune, India



DUCATI energia Product Divisions

Electrical Vehicle and Charging Station

Alternators Ignition Systems

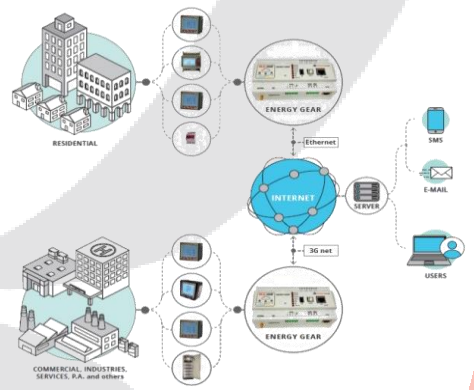
Power, Motor & Lighting Capacitors

IT Systems

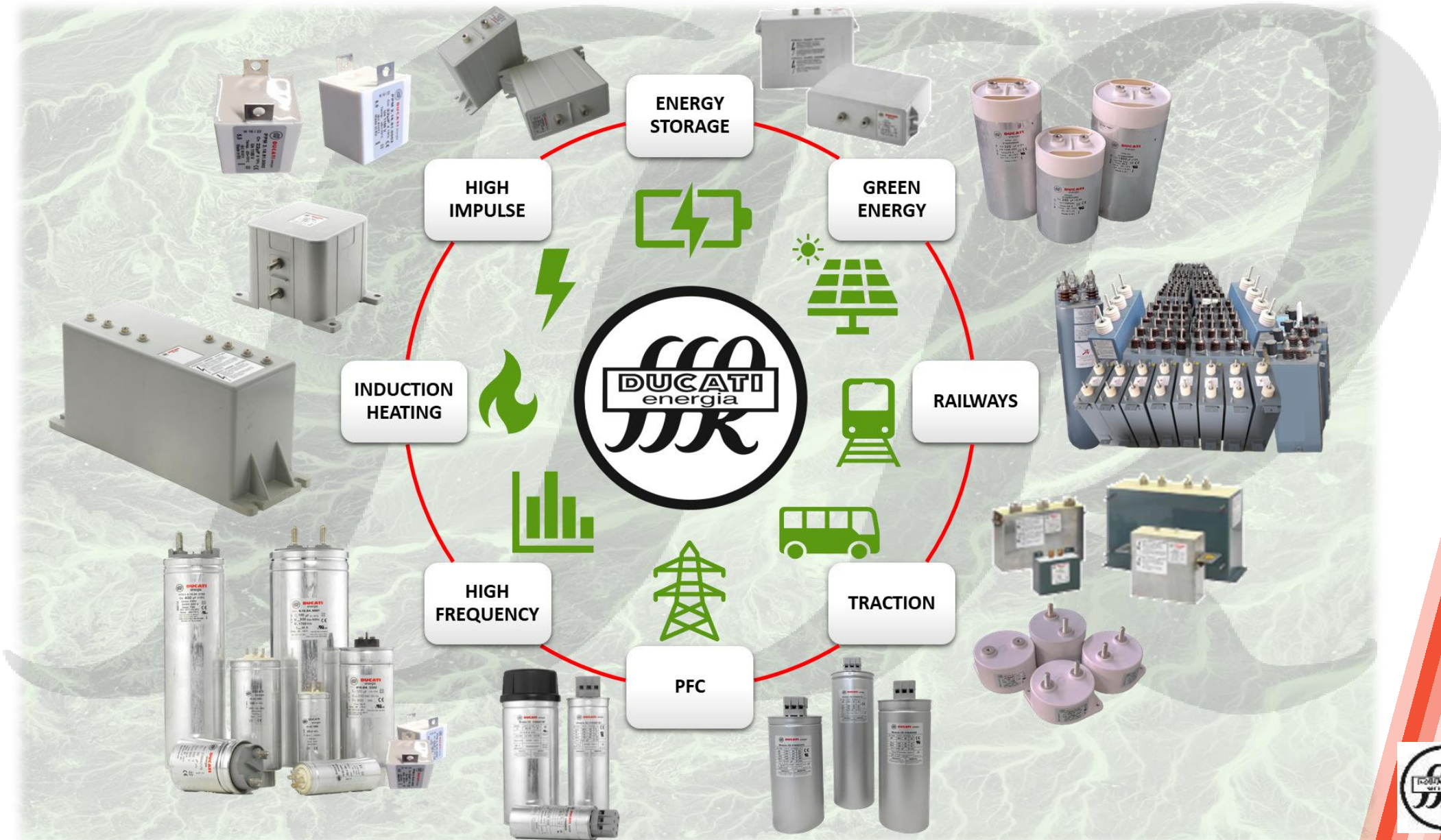
Power Factor Correction LV/HV

Energy & Electronic instruments

Railway



Power Electronic Capacitors



From Measure to Design

THERMAL AND ELECTRICAL TESTING EQUIPMENT



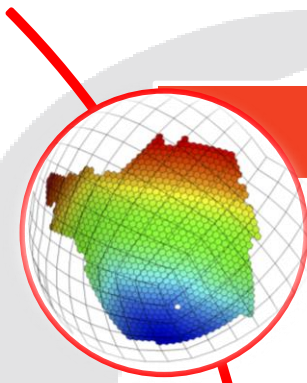
CAP & TG AT RATED VOLTAGE



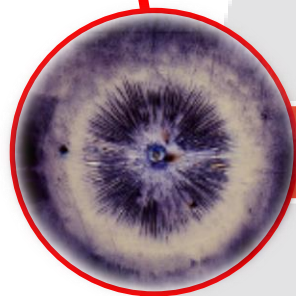
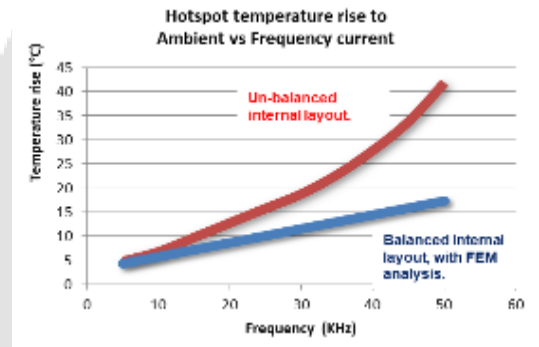
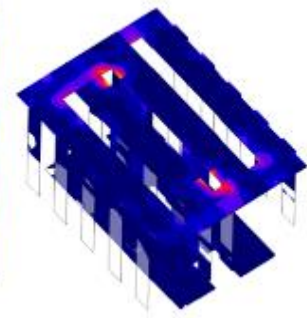
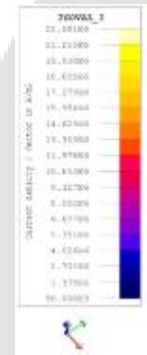
CAP & TG AT SEVERAL FREQ



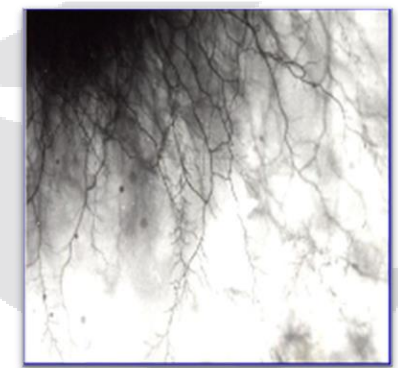
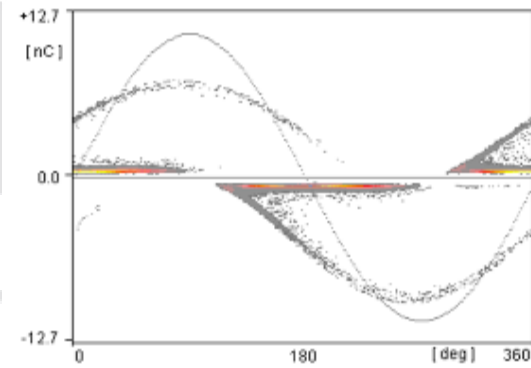
Technology Analysis



FEM High Frequency Analysis



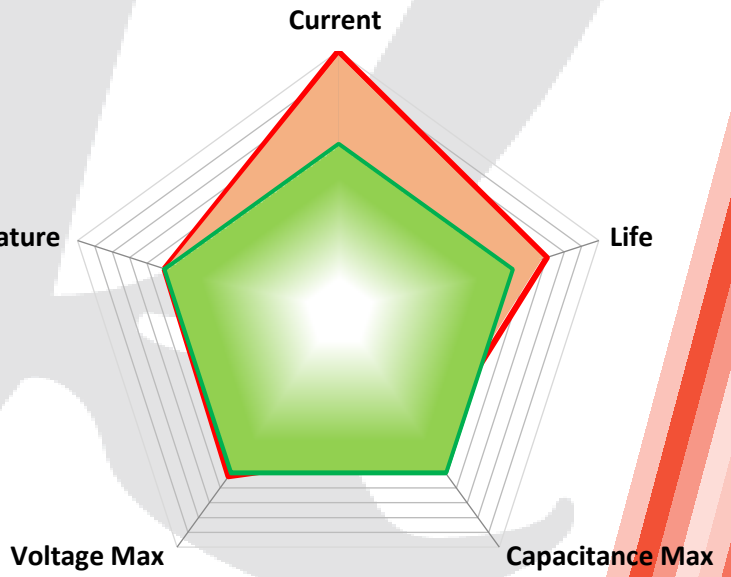
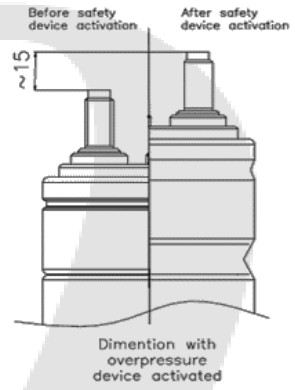
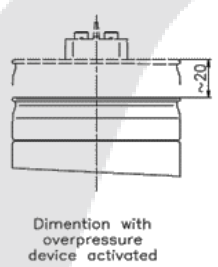
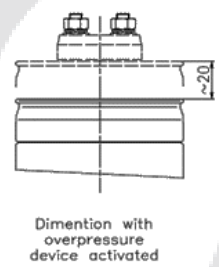
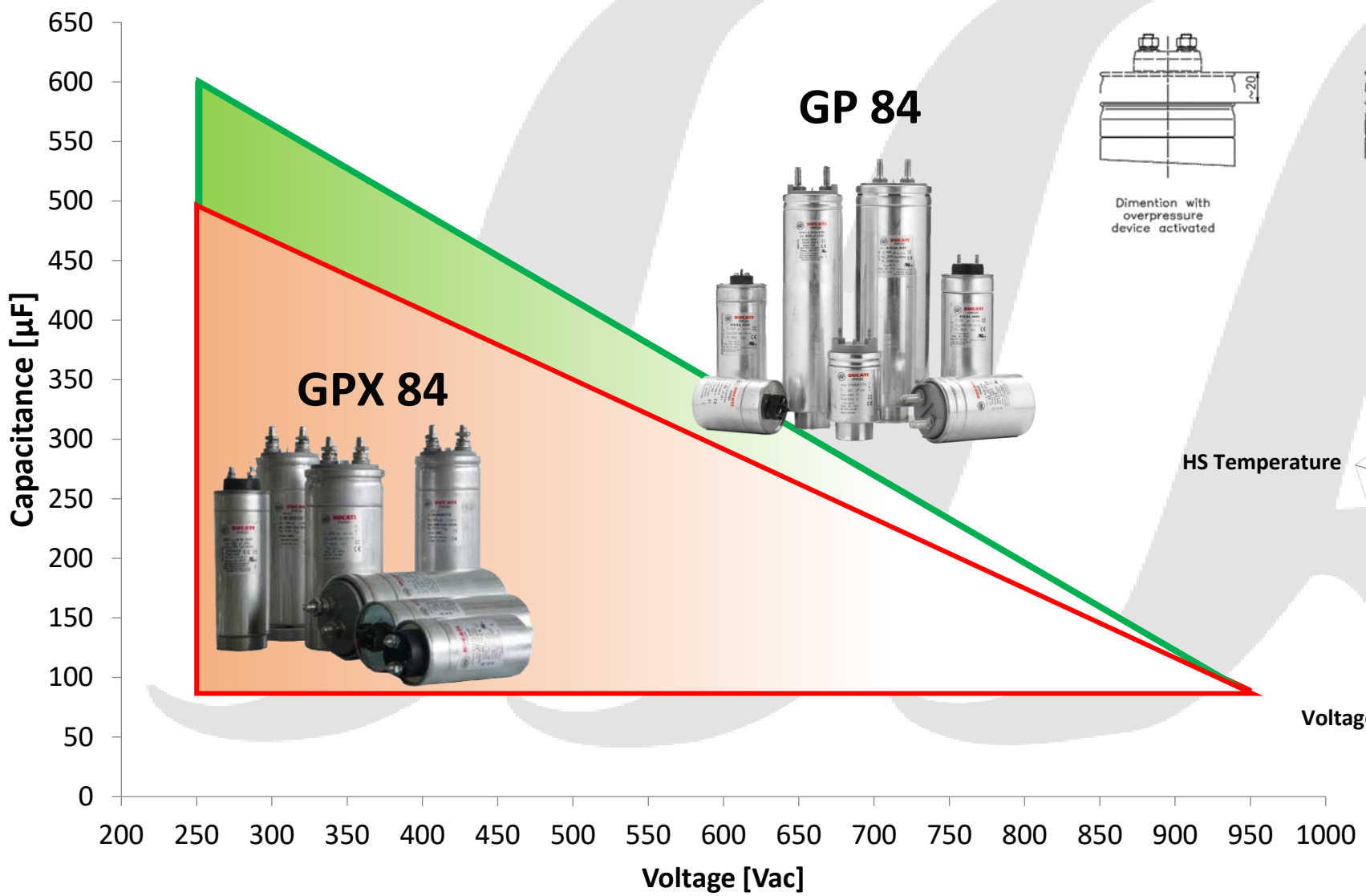
Partial Discharges Protection



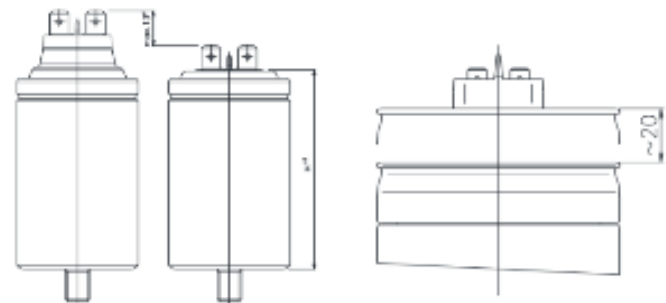
Harsh Environment Design



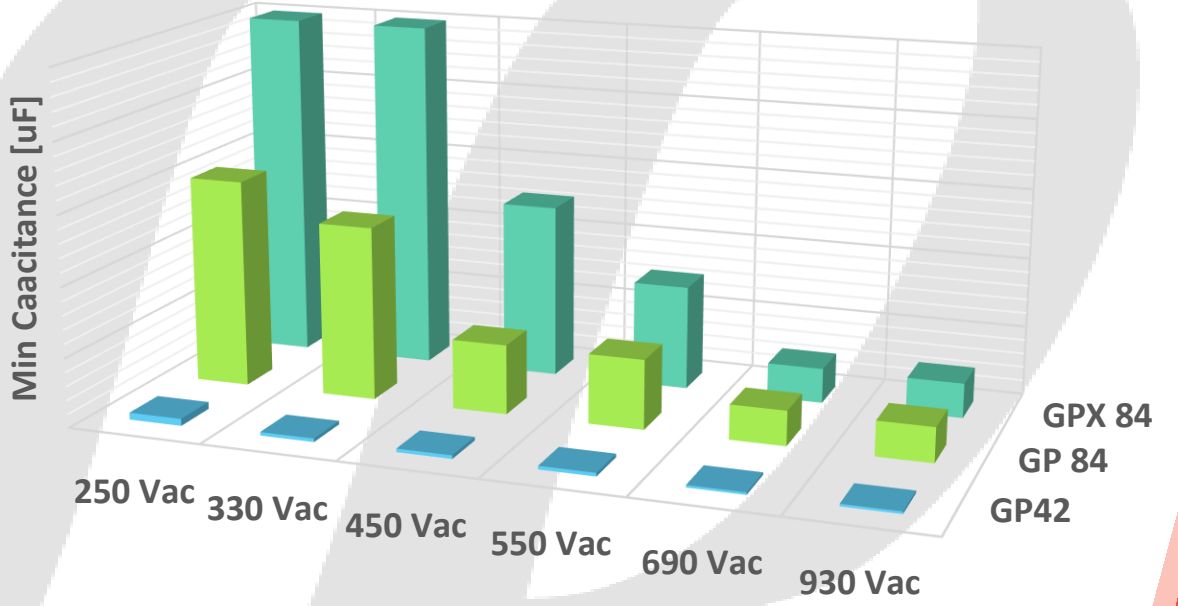
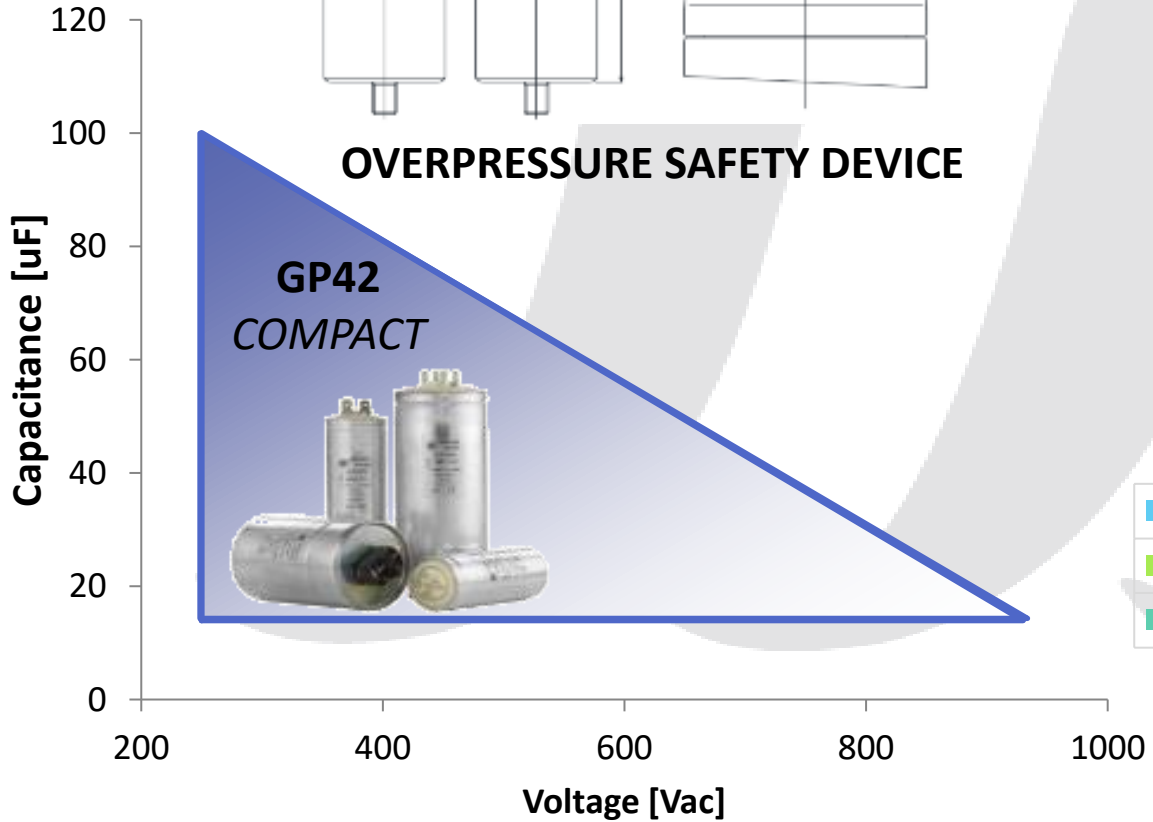
AC Filter Capacitor – Cylindrical version



AC Filter Capacitor – Low Capacitance Version



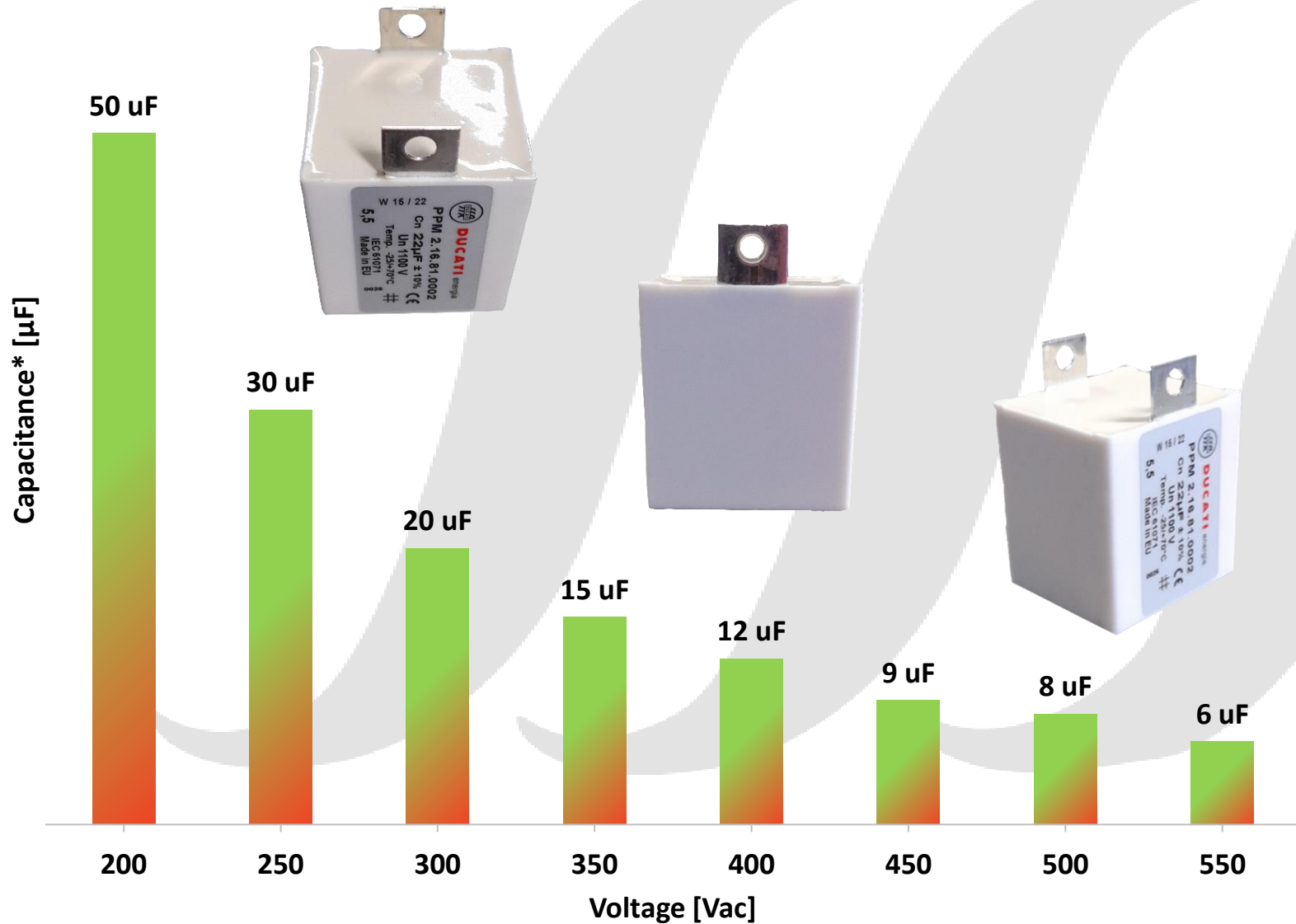
OVERPRESSURE SAFETY DEVICE



	250 Vac	330 Vac	450 Vac	550 Vac	690 Vac	930 Vac
■ GP42	2 uF	1 uF	1 uF	1 uF	1 uF	1 uF
■ GP 84	60 uF	50 uF	20 uF	20 uF	10 uF	10 uF
■ GPX 84	100 uF	100 uF	50 uF	30 uF	10 uF	10 uF



AC Filter – Modular Version

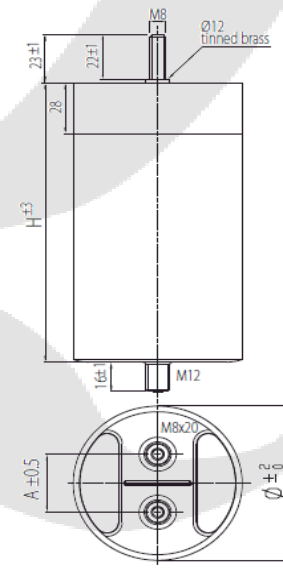
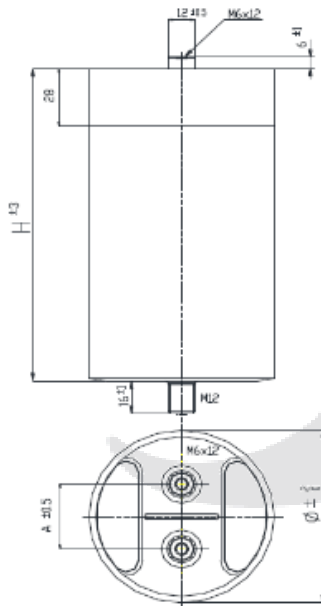
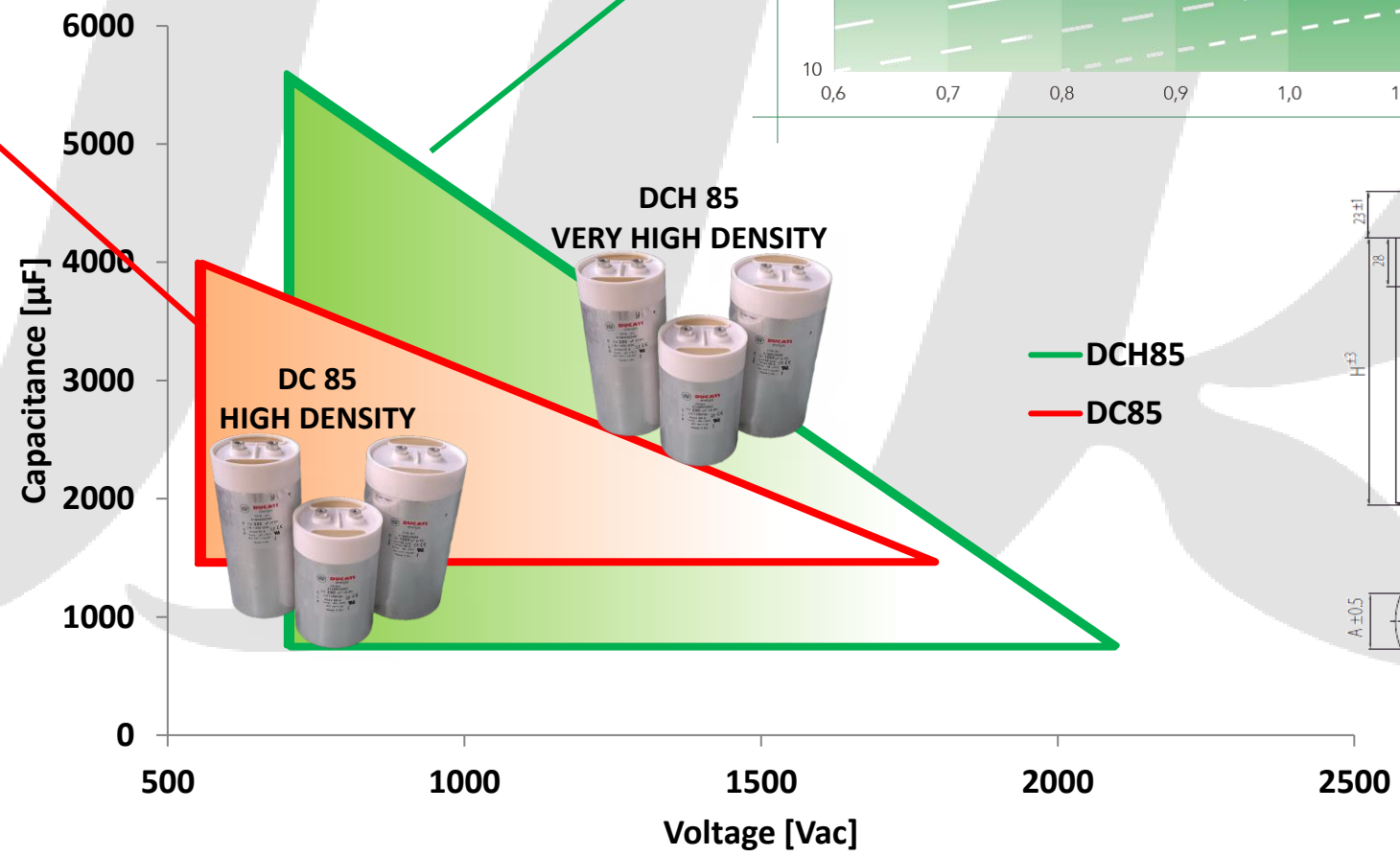
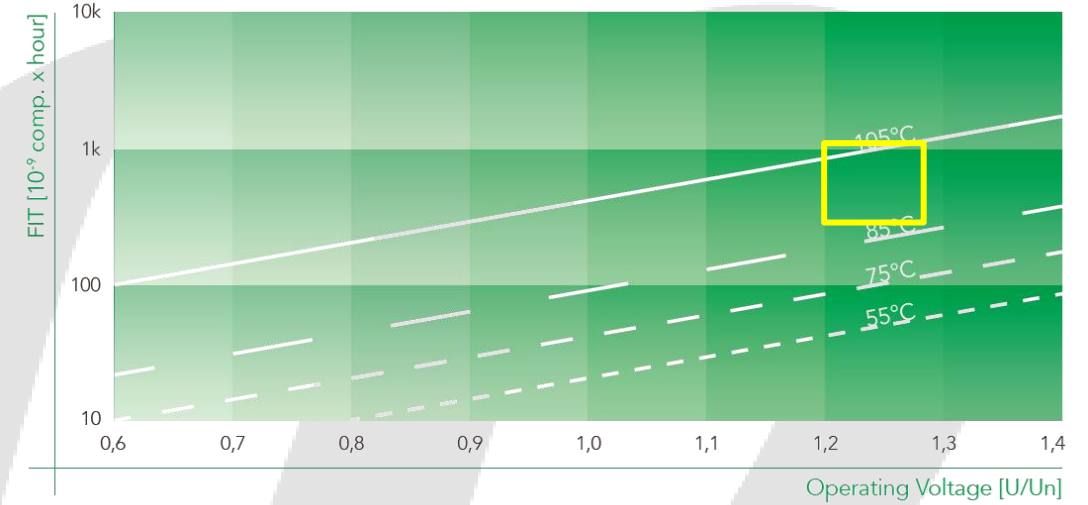
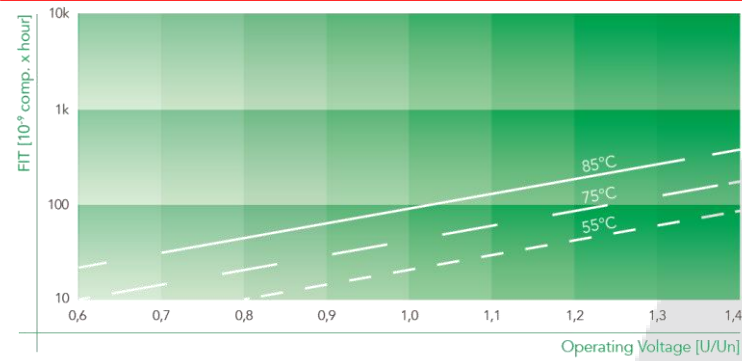


- Flexibility
- Scalability
- Easy integration
- Cost-effective
- Safety
- Low ESL for high frequency application

* Max Capacitance available for the volume



Cylindrical DC-Link

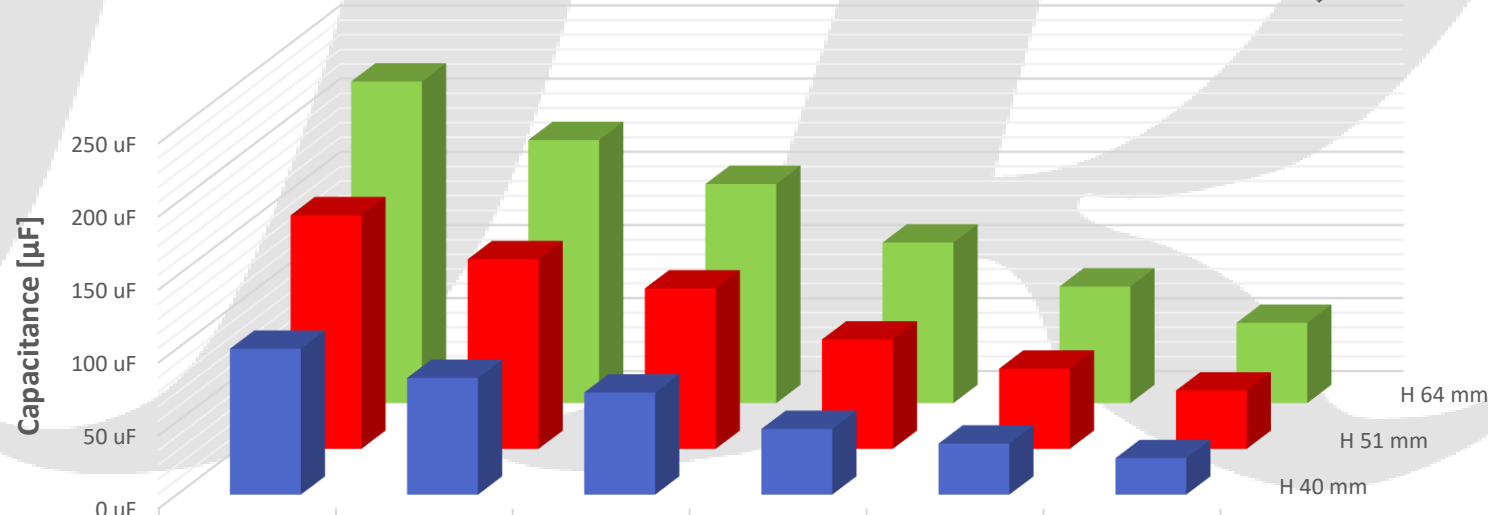
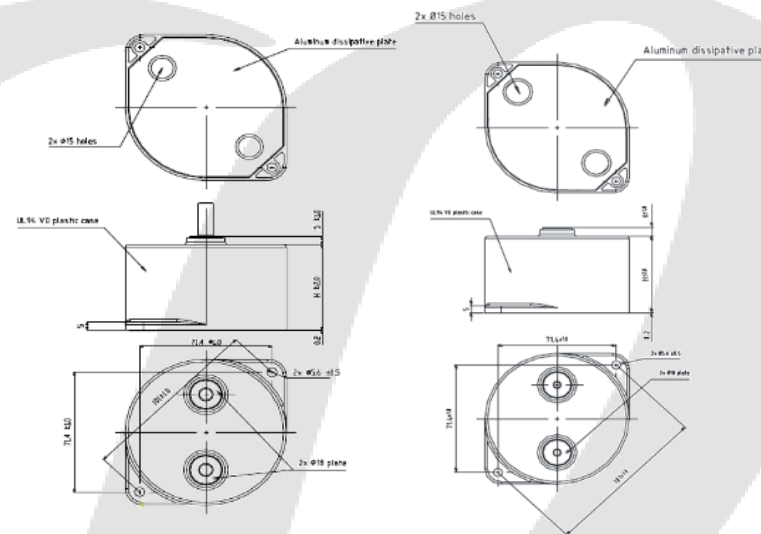


— DCH85
— DC85



Cylindrical Dc-Link – Snubber capacitor

DC89 HC
HIGH CURRENT



	500 Vdc	700 Vdc	900 Vdc	1100 Vdc	1250 Vdc	1450 Vdc
■ H 40 mm	100 µF	80 µF	70 µF	45 µF	35 µF	25 µF
■ H 51 mm	160 µF	130 µF	110 µF	75 µF	55 µF	40 µF
■ H 64 mm	220 µF	180 µF	150 µF	110 µF	80 µF	55 µF

Main characteristics:

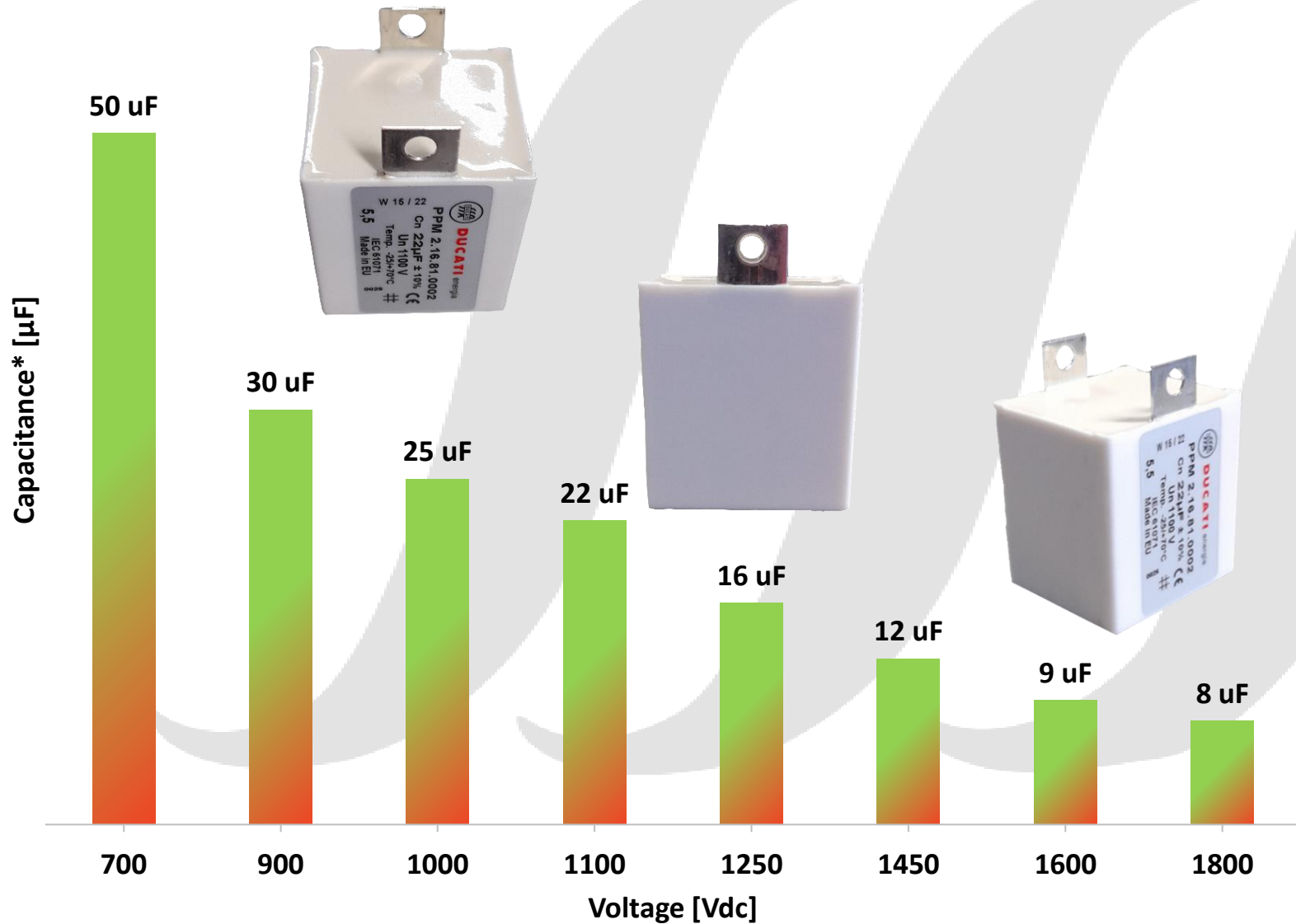
- Very High Capacity Density
- Self-Healing Metallized Polypropylene Film
- UL-Approved Construction
- V0 Plastic Case
- DRY Resin filling
- REAL Very Low ESL

Main applications:

- High Switching Frequency DC-Link



DC-Link – Modular Version

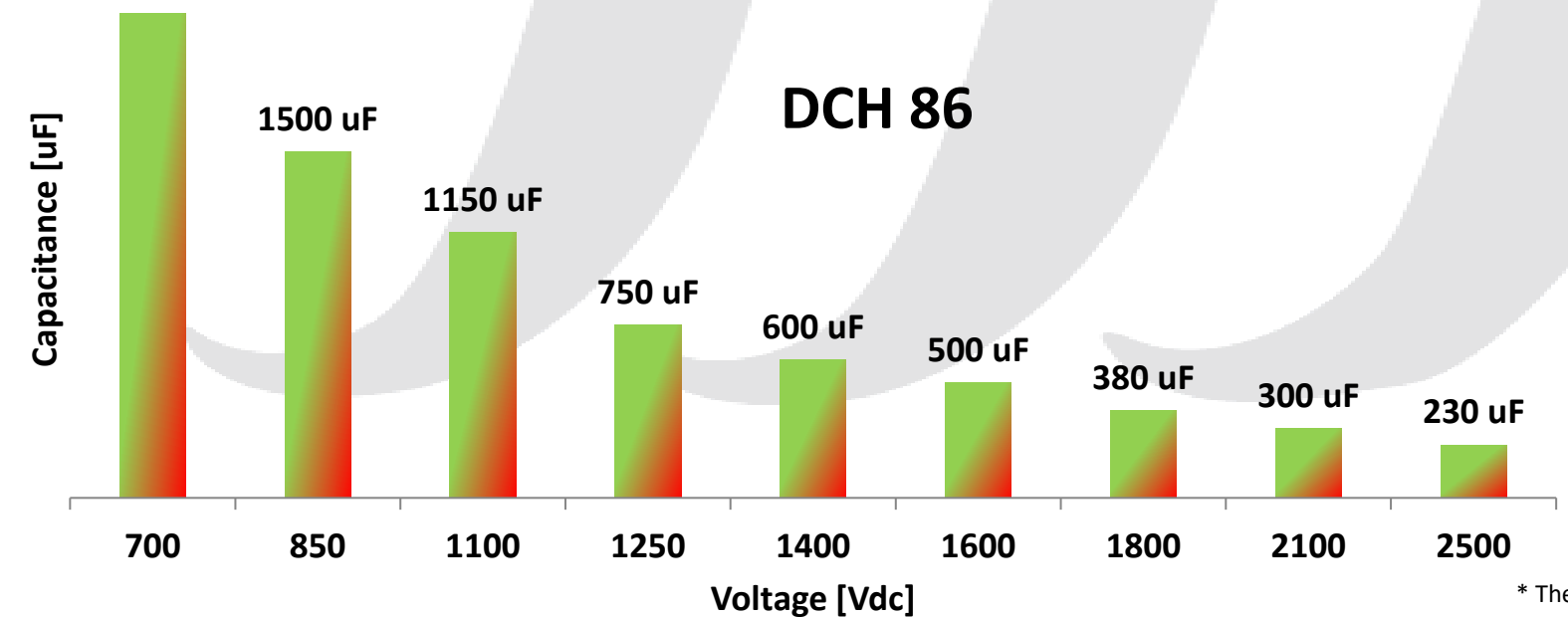
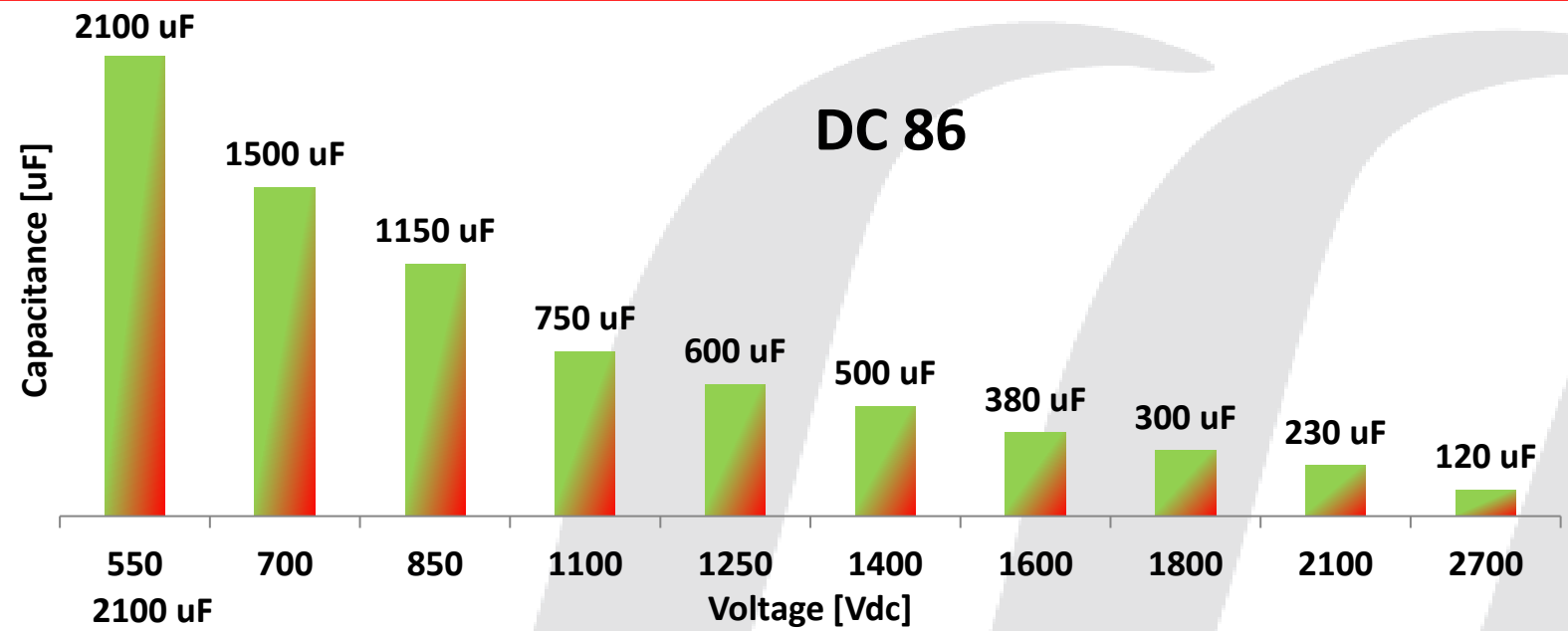


- Flexibility
- Scalability
- Easy integration
- Cost-effective
- Safety
- Low ESL for high frequency application

* Max Capacitance available for the volume

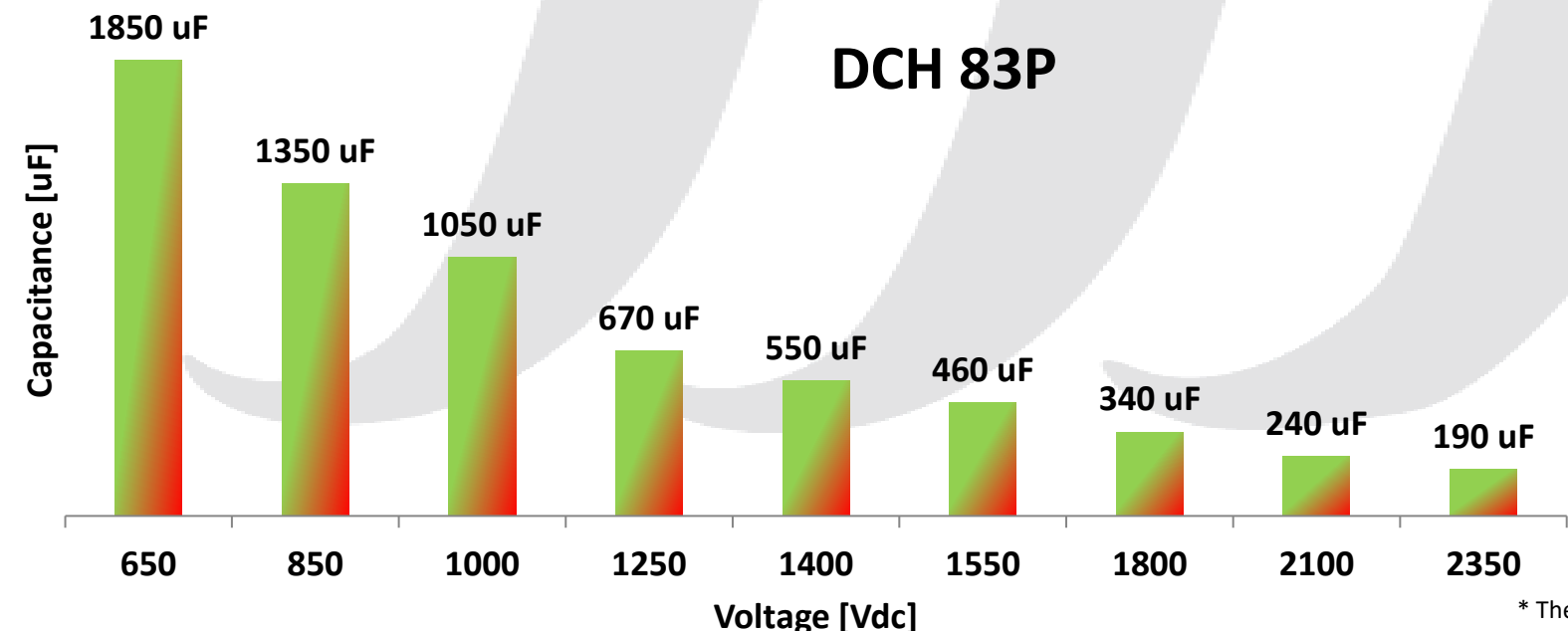
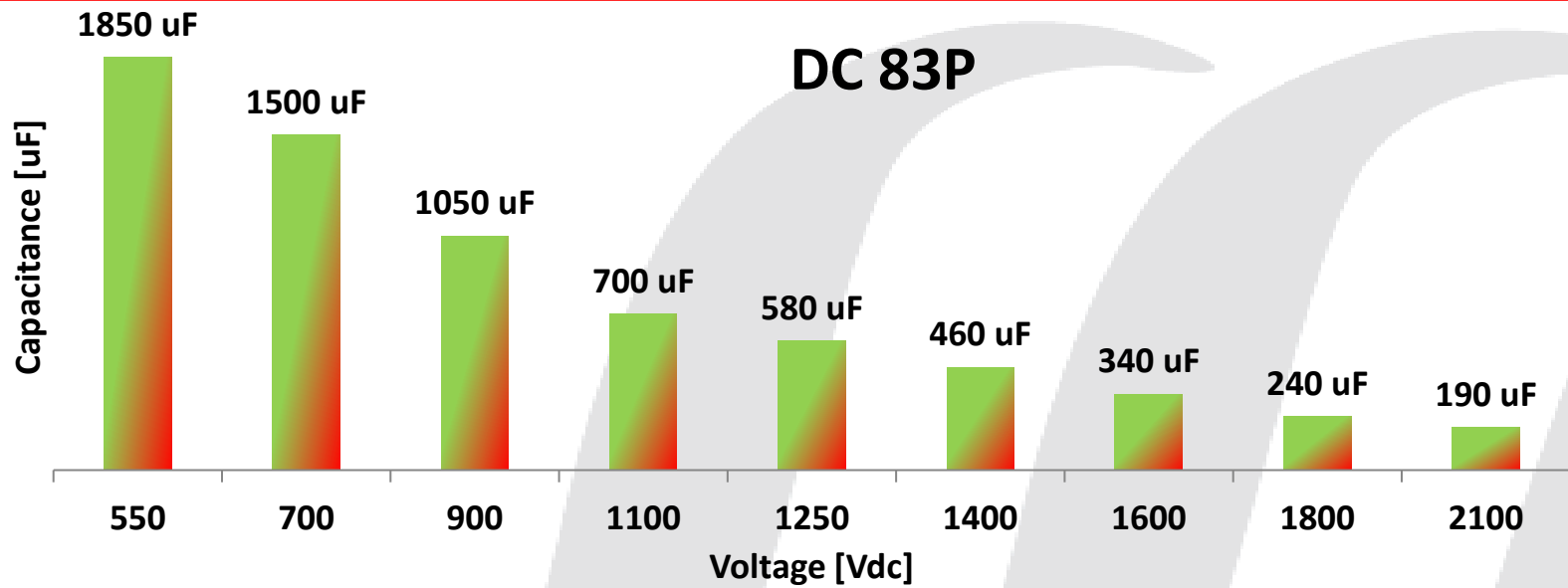


Prismatic Plastic DC-Link - 75 x 124 x 210* mm



* The length considering the connection holes is 237,5 mm

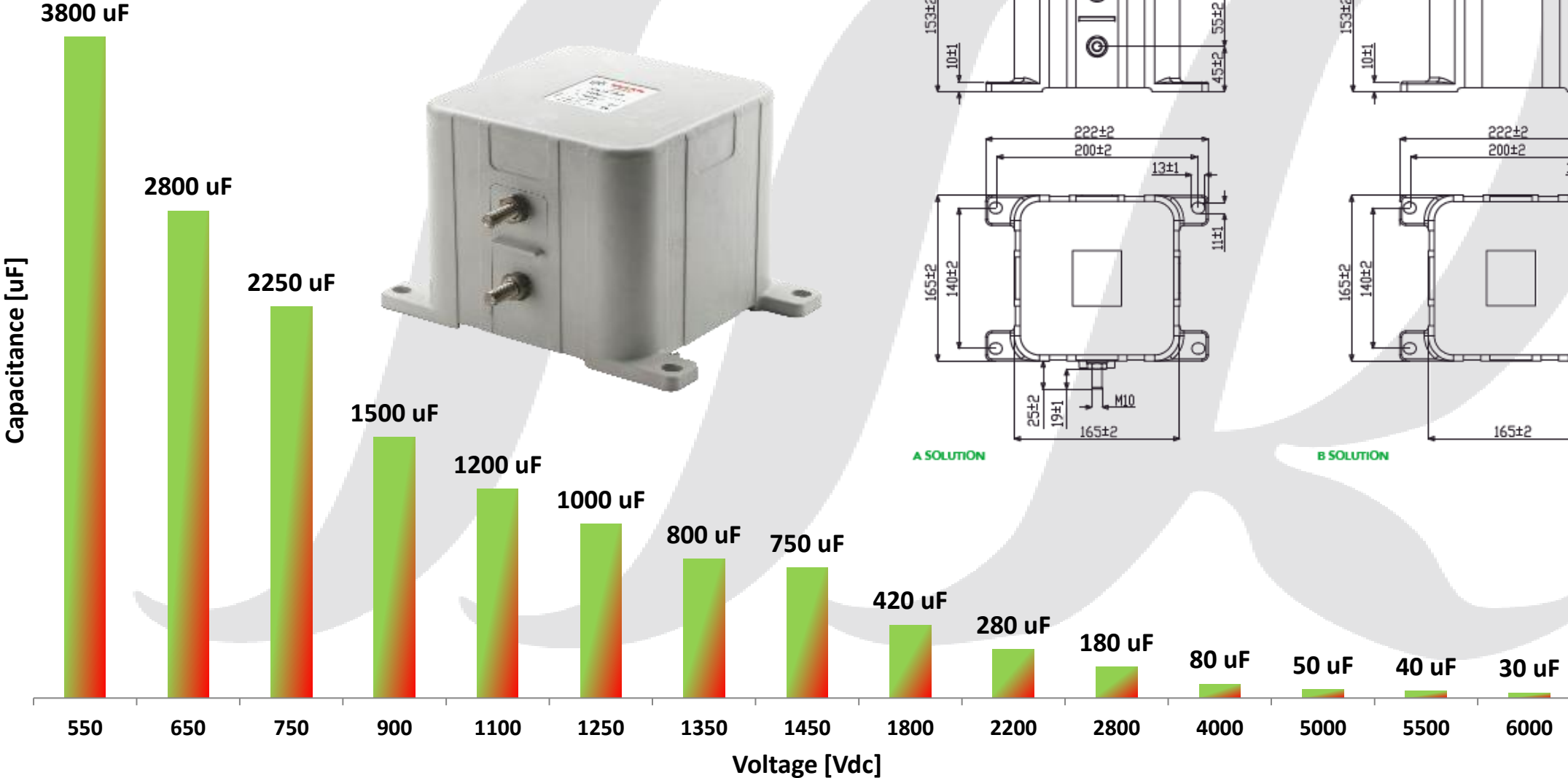
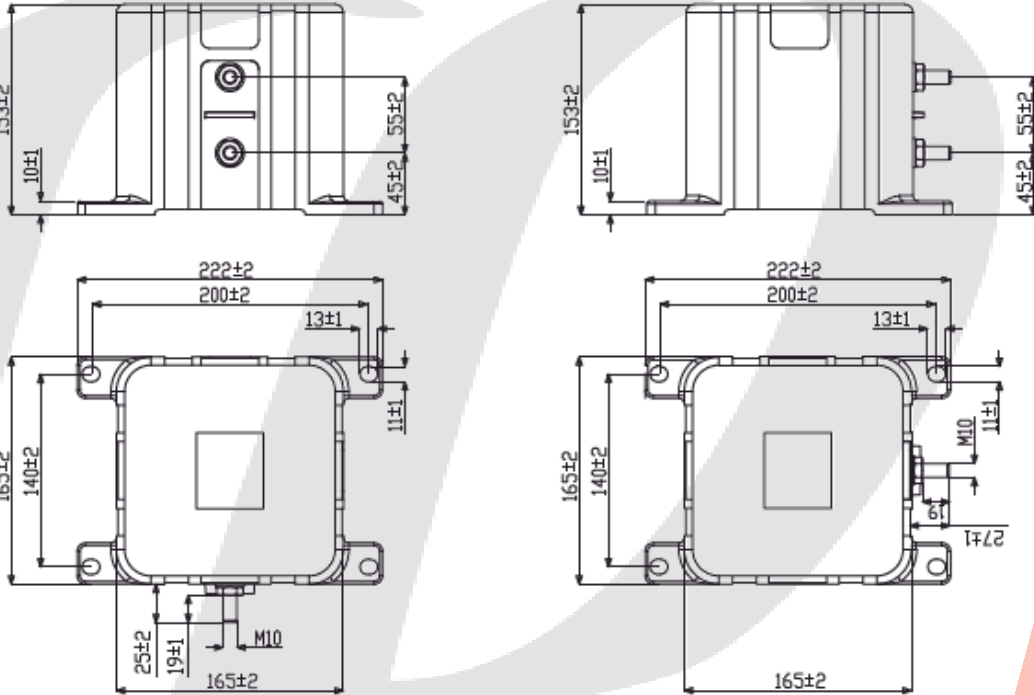
Prismatic Plastic DC-Link - 75 x 170 x 165* mm



* The length considering the connection holes is 215 mm

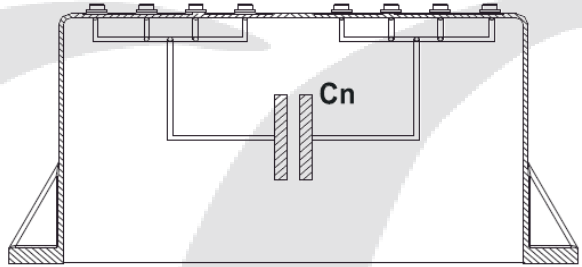
Cubic Plastic Dc-Link - 165 x 165 x 153

DC 85 B
HIGH DENSITY

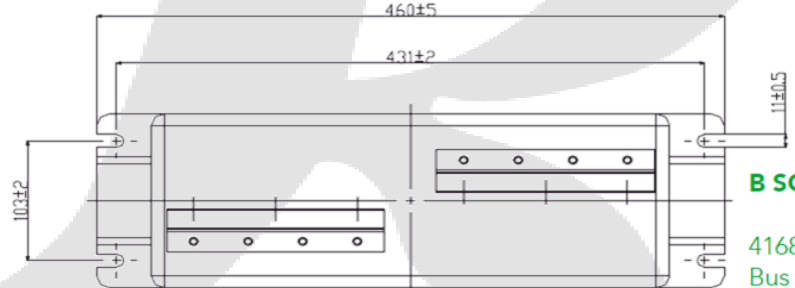


Prismatic Plastic DC-Link - 150 x 235 x 380* mm

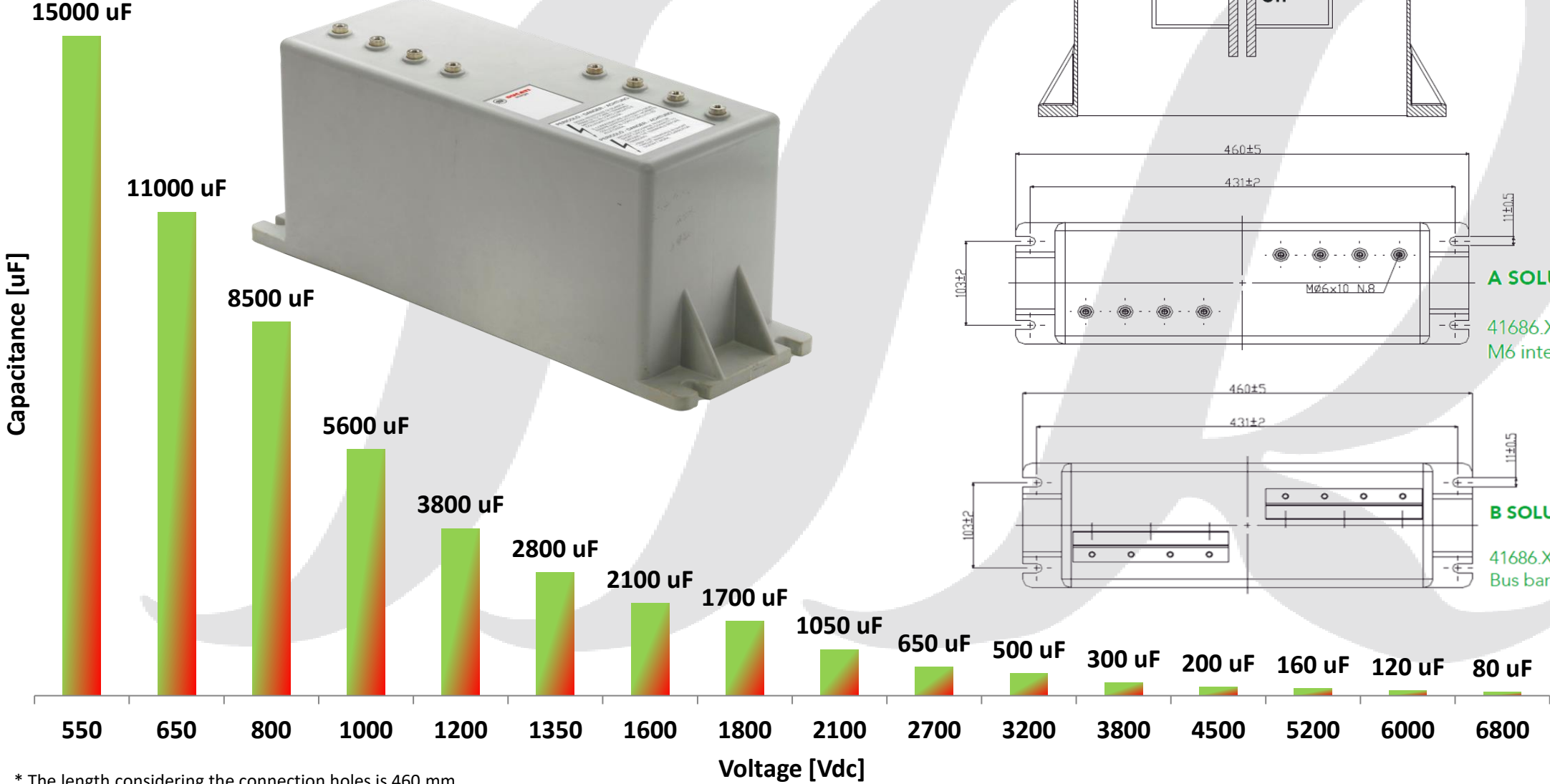
DC 86 P



A SOLUTION
41686.XXX.0
M6 internal threads



B SOLUTION
41686.XXX.1
Bus bar terminals

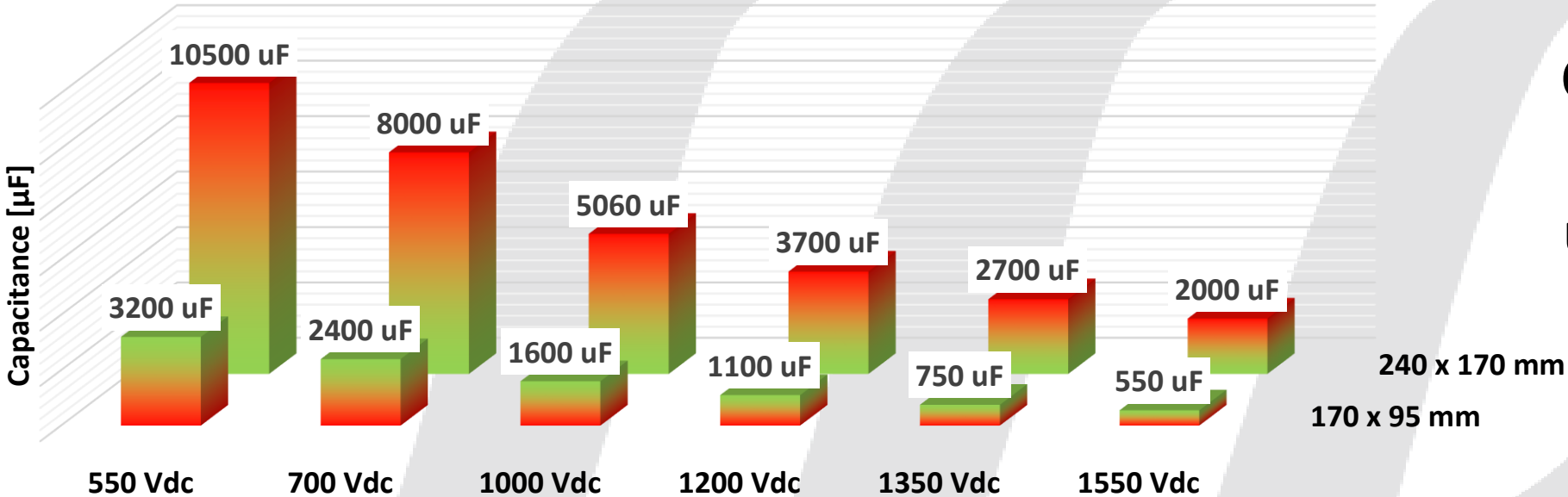


* The length considering the connection holes is 460 mm



Metallic DC-Link – Resin Filled

DC 88 M - METALLIC DC-LINK



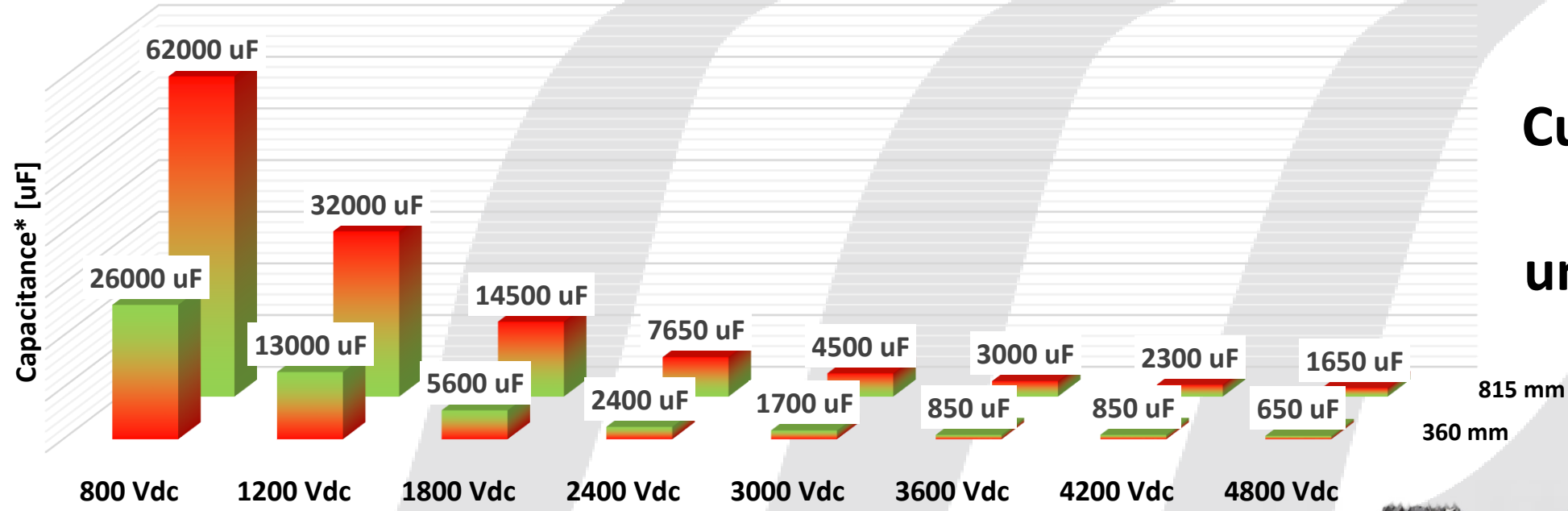
Customization available under request

240 x 170 mm
170 x 95 mm



Metallic DC-Link for High Power application

DC 45 - METALLIC DC-LINK

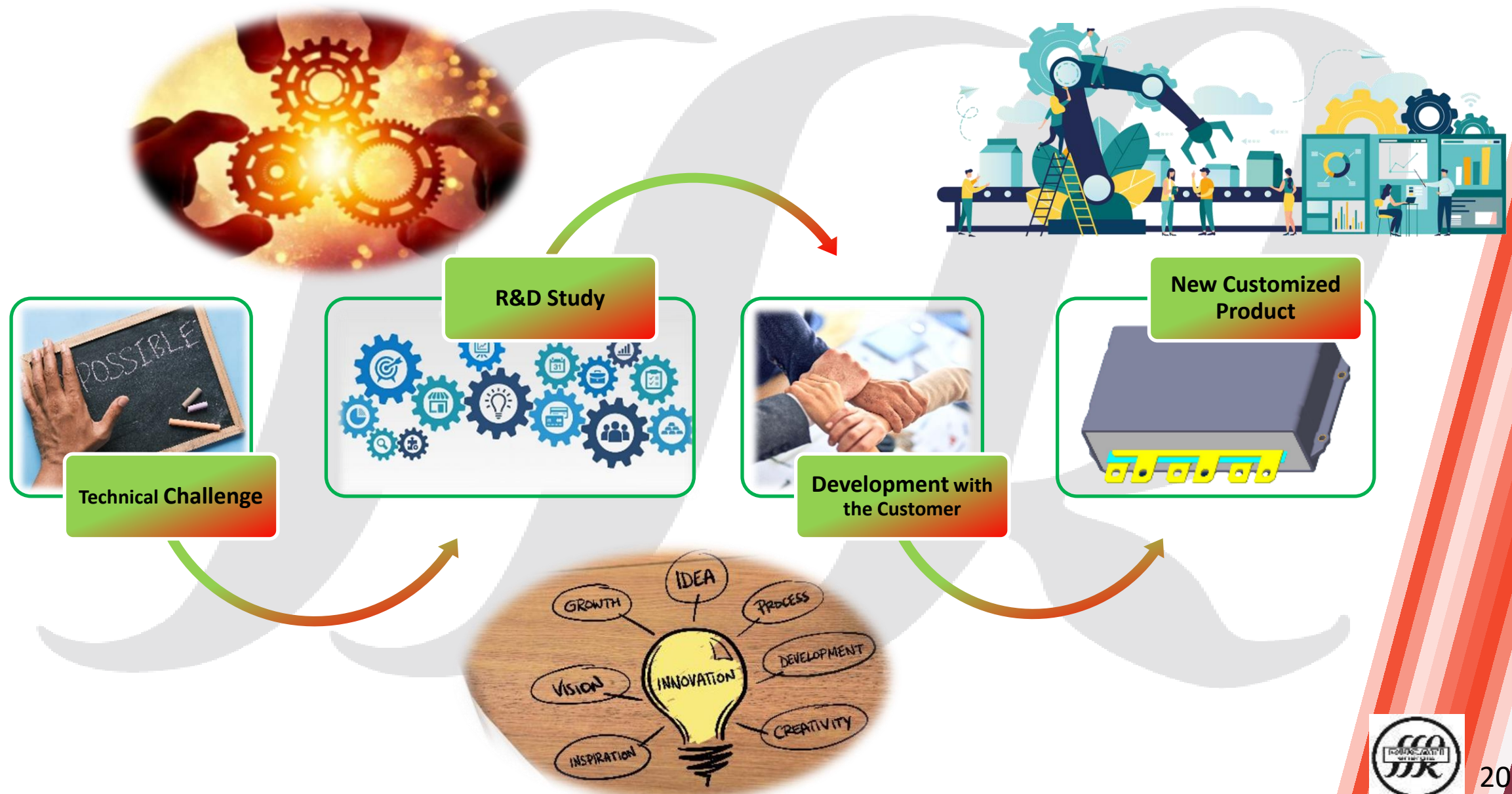


**Customization
available
under request**

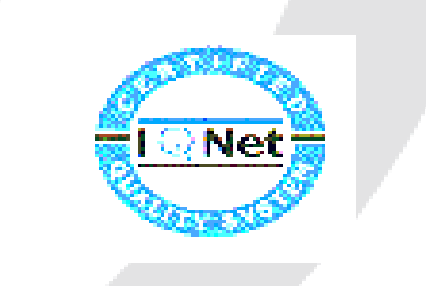
Height	Base
360 mm	(W) 125 x (L) 340 mm
515 mm	(W) 140 x (L) 340 mm
700 mm	(W) 165 x (L) 480 mm
815 mm	



Customer Oriented



Certifications



PRODUCTION SELF-CERTIFICATION

SUPPLIERS CERTIFICATION

DESIGN CONTROL

PROCESS CONTROL

FINAL CONTROL (100%)



CE





DUCATI energia
HISTORY DRIVES THE FUTURE

DUCATI energia S.p.A.

Via M. E. Lepido, 182
40132 Bologna, Italy

 **+39 051-6411511**

 **+39 051-402040**

 **info@ducatienergia.com**

Online Catalogue



