

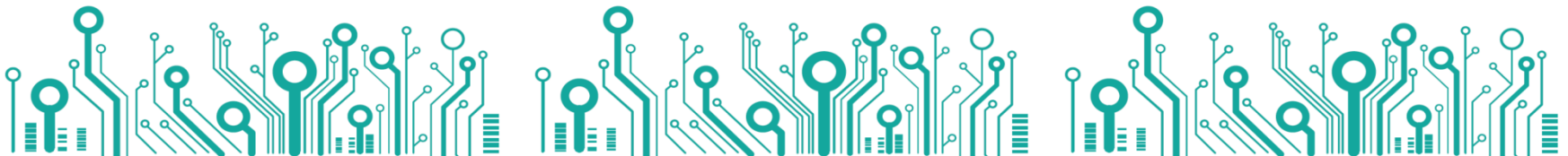


QUALITY ELECTRONIC DESIGN

# Company Profile

**Q EED** THE ELECTRONIC BRAND OF **D.E.M.** S.p.A.

DEM S.p.A. - Z.I. Villanova, 20 - 32013 Longarone (BL), Italy - [www.dem-it.com](http://www.dem-it.com) - Ph. +39 0437 761021



## WHO WE ARE

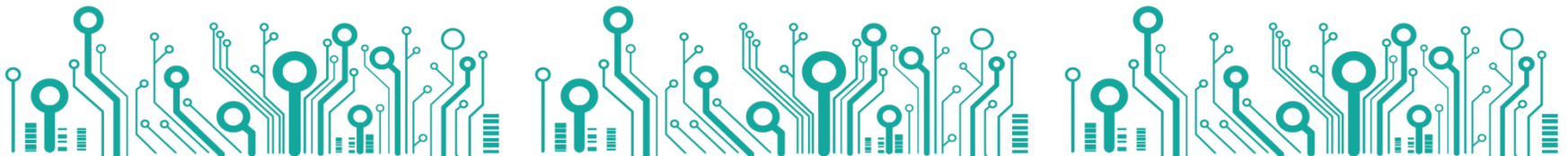
**D.E.M.** S.p.A.

**DEM** spa is an european market leader for **design and manufacturing of suppression filters for radiofrequency interference (RFI)** for home appliances and similar devices.

**DEM SpA is a fully Italian private company**, founded in 1987. Headquarters building, located in Longarone (Belluno)- Italy, and the production plant located in Pakrac (Croatia) are fully owned.

The **2016 turnover has been approx 14 Mln €.**

Europe is DEM's main market in terms of sales approx 20% Italy and 80% other European countries. The major customers are home appliances (80%) and industrial OEM's (20%).



# Headquarters and Production Plant

## **D.E.M. doo**

ZONA MALE PRIVREDE 4  
Pakrac (Croatia) – close to Hungary

**3.400 square meters**

**240 employees**

**ISO 9001**

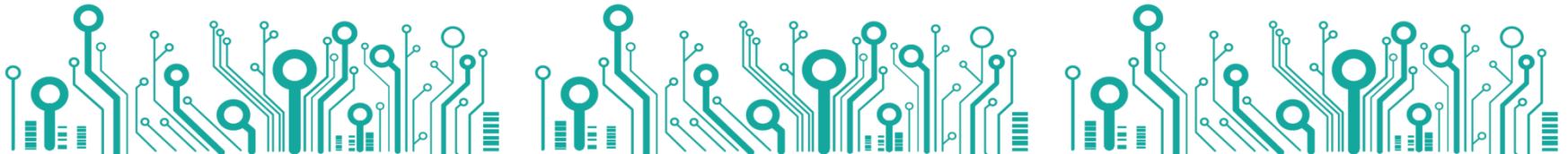


## **D.E.M. Spa**

Zona Industriale Villanova 20  
Longarone (BL) – Italy

**2.000 square meters**

**25 employees**

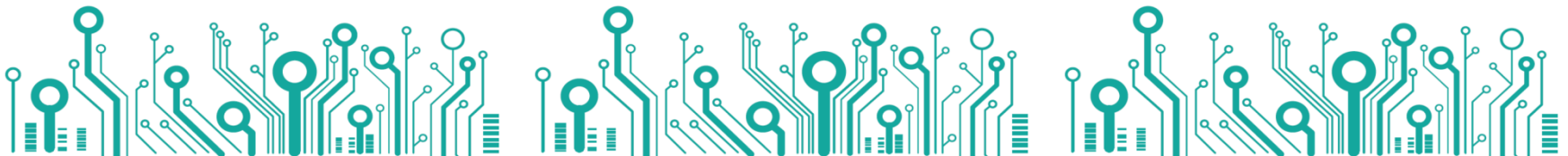


**QEED is the electronics division of DEM SpA, able to develop and produce electronic boards dedicated to the world of industrial automation. The use of the latest components and the constant search for new technical solutions allow us to be at the forefront in the creation of objects high performance, reliable and economical.**

**QEED is a registered trademark from 2013.**

The division includes the production of **1,5 Million pcs/years of electronic boards** for several customers (mainly on the thermoregulation market) as Third party production.

From 2012 we developed and produce customize project (firmware and hardware).

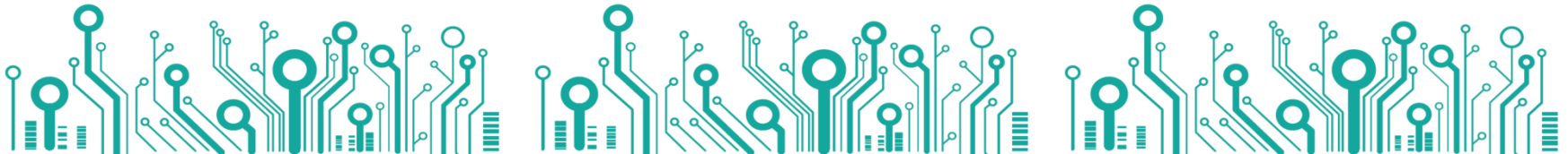


# THE TEAM

Our organization provides for the **use of professionals in the industrial automation sector**, able to establish itself in the past with innovative, high-performance, gathering the consensus of the market through the **constant technical and commercial activity close to the customers.**

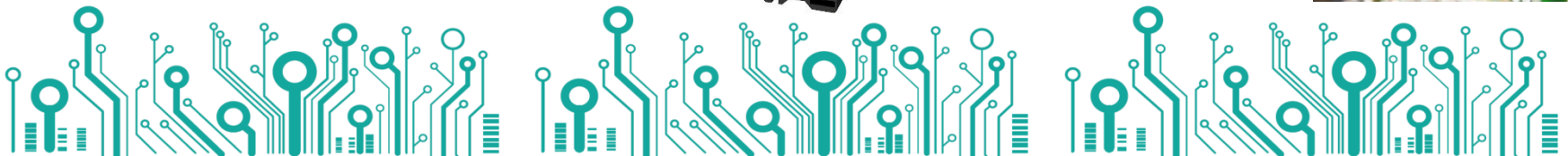
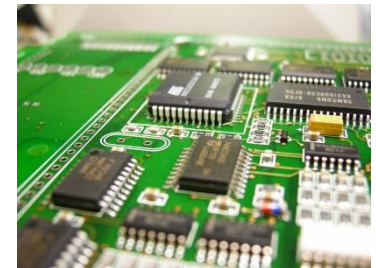


Person in charge	Job	Contact
Matteo Pecchi	Sales	sales@qeed.it
Cristiano Sostero / Mattia Berton	Technical Dept.	technical@qeed.it
Rosanna Da Cas	Customer Service	customerservice@dem-it.com
Cesare De Bona	Technical Support /Service	emclab@dem-it.com



# PRODUCTS LIST

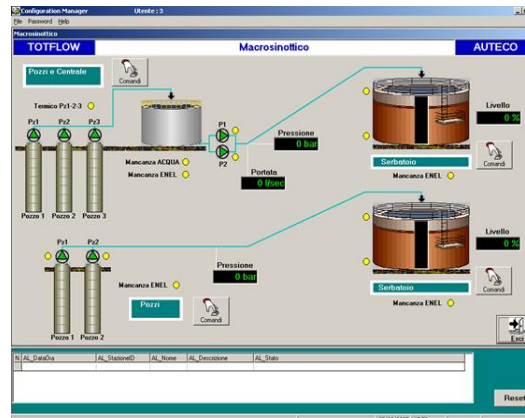
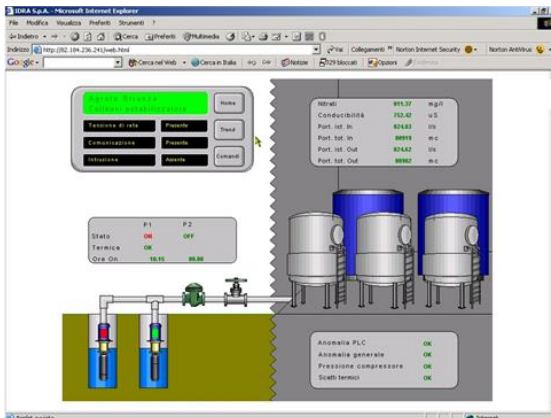
- ISOLATED SIGNAL CONVERTERS / INTERFACES
- AC/DC POWER METERS, NETWORK ANALYZERS SINGLE AND 3-PHASE
- AC/DC CURRENT TRANSFORMERS AND CURRENT CONVERTERS
- CUSTOM BOARDS





# WHY THESE PRODUCTS ?

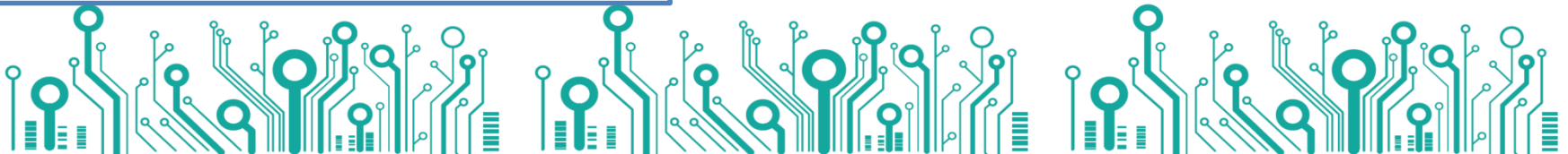
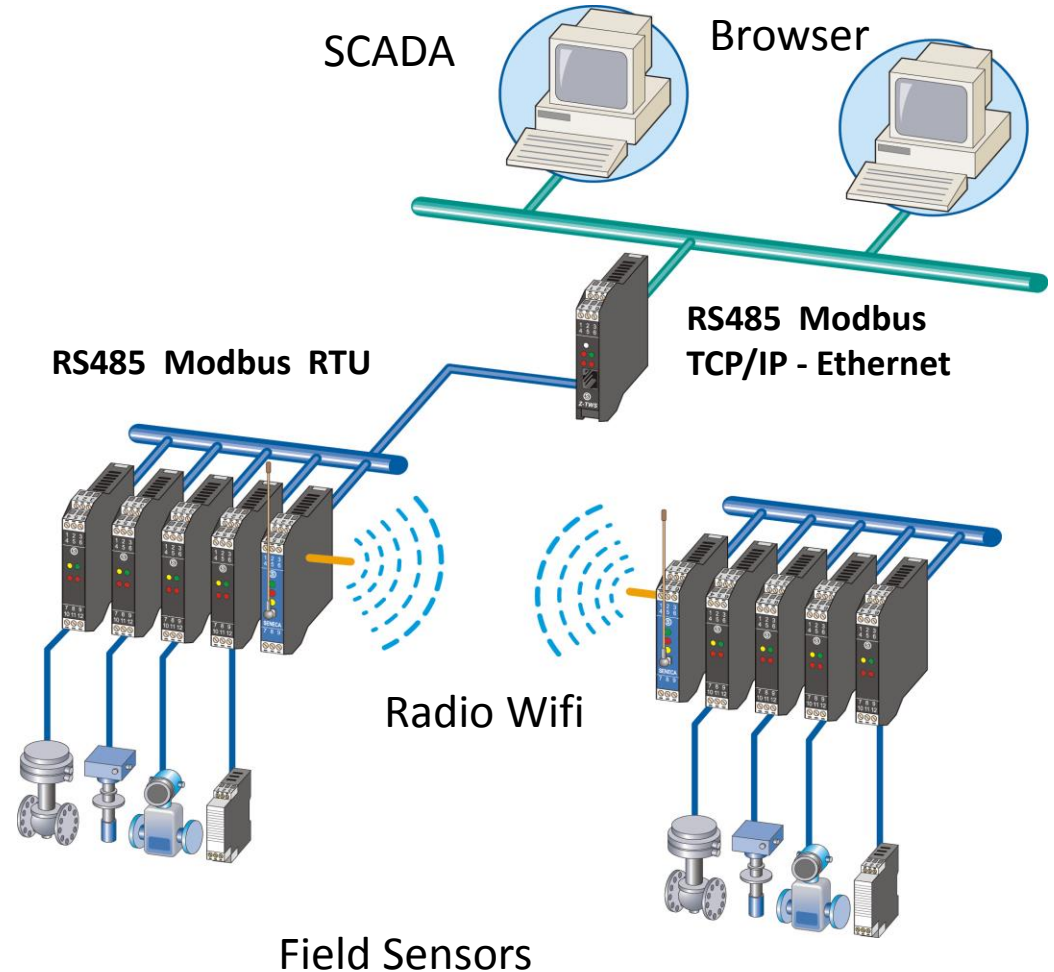
- In the Automation market there are a lot of high level products like PLC, HMI, Controllers, etc, but there are a **poor offer of Interface and meters** thought to be **connected directly with the controllers** (master);
- Most of the automation performed in various companies are small automations, that need smart and cheap solutions. We thought about a very **flexible devices** able to meet, **with only one device, all the needs.**
- In recent years, the need is emerging to **measure and monitor every production process** in order to make efficiencies and save money. There are lots of good systems to collect data: Web based, Industrial Scada Systems, Local Dataloggers, etc.. All these systems need **SENSORS and INTERFACE** modules !





# WHY MODBUS ?

- MODBUS is an open protocol, worldwide know, not linked to any producer of devices (Profibus-> Siemens);
- Allow you to connect up to 247 Modbus nodes (devices) on the same bus;
- The RS485 allow you to reach 1,2 km of length with the same cable;
- There are a lot of protocol converter from/to Modbus;
- Modbus TCP/IP is a standard for Ethernet communication;
- 50% of the Automation market talks via Modbus





**PROUD TO WORK WITH YOU !**

**All your suggestions are valuable!**

**We share with you our future...**



**THANK YOU !**

